

Features and Benefits of Aquos™ BC-8 Benthic Chamber include:

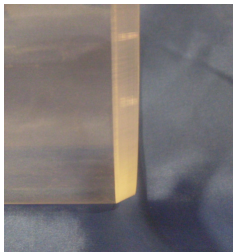
- Rugged cast acrylic material used in the construction of the benthic chamber provides long life in harsh aquatic environments
- O-ring seal between the headplate and main chamber isolates water inside the chamber from water outside
- Stainless steel bolts securing the headplate to the main chamber and the Motor Chamber to the headplate resist corrosion and ensure that you can easily disassemble these components when necessary
- O-ring seal between Motor Chamber and the main chamber is designed to prevent water from entering the Motor Chamber
- Flexible cable joint at the top of the Motor Chamber ensures that the cable does not kink or undergo a sharp bend at the point of entry into the Motor Chamber
- Triple-sealed flexible cable joint ensures that the Motor Chamber remains waterproof to depths of up to 100 feet
- Jacketed power cable linking the benthic chamber to the power source is waterproof and prevents the ingress of water into the conductors
- Two-way valve on headplate allows user to equalize chamber volume with outside water during sampling
- Septum port on the headplate permits insertion of a syringe needle to withdraw samples as needed; spare septa available.
- Spare port on the headplate allows you to insert optional sensors in the future; port is sealed with watertight, nickel-plated brass cap
- Fully sealed male plug at the cable end ensures that the plug is waterproof
- Beveled bottom edge of the benthic chamber allows you to push the chamber edge conveniently into a variety of sediments



Headplate



Volume equalization valve



Beveled edge



Depth Collar

- Adjustable depth collar around the benthic chamber ensures that the bottom edge of the benthic chamber penetrates the sediment to a predetermined depth
- Powerful stepper motor with precisely controlled rotation to ensure gentle yet consistently reproducible mixing inside the chamber
- Strong rare earth drive magnet eliminates the need for the motor shaft to penetrate the chamber, thus eliminating any possibility of contamination
- PTFE-encased, cross-shaped mixing impeller is magnetically coupled to the drive magnet and ensures thorough mixing of chamber water
- Knurled knobs on headplate allows convenient mounting of headplate to the main chamber even with gloved hands underwater



Knurled knob



Mixing impeller